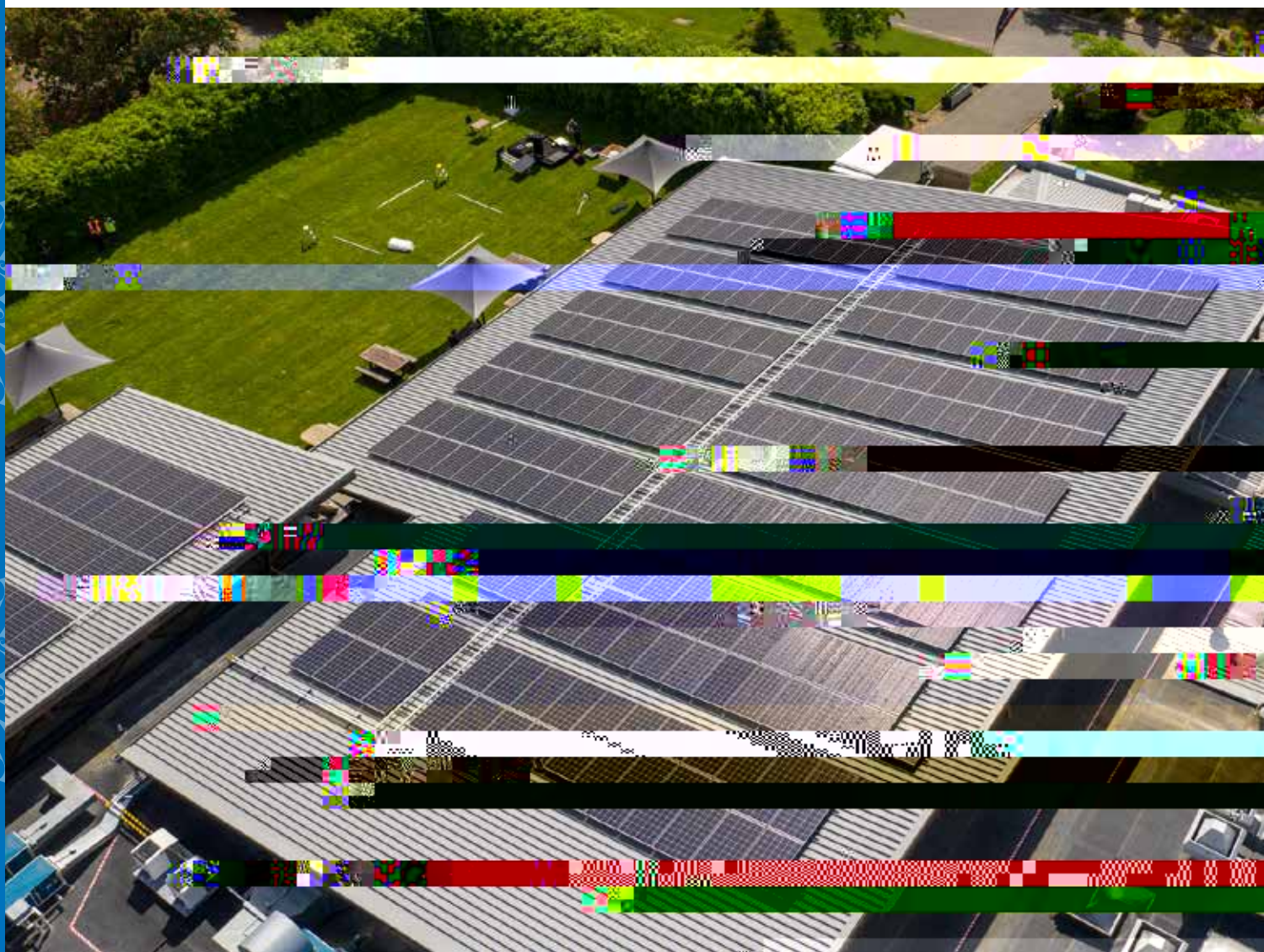




LINCOLN
UNIVERSITY
TE WHARE WĀNAKA O AORAKI

Lincoln Universi

S a l a i i P a





Ka tipu, ka rea, ka whanake
ake te r kau m tauraka

Ko t na pakiaka,
he waewae haere

Ko t na kaupapa,
he takata ora

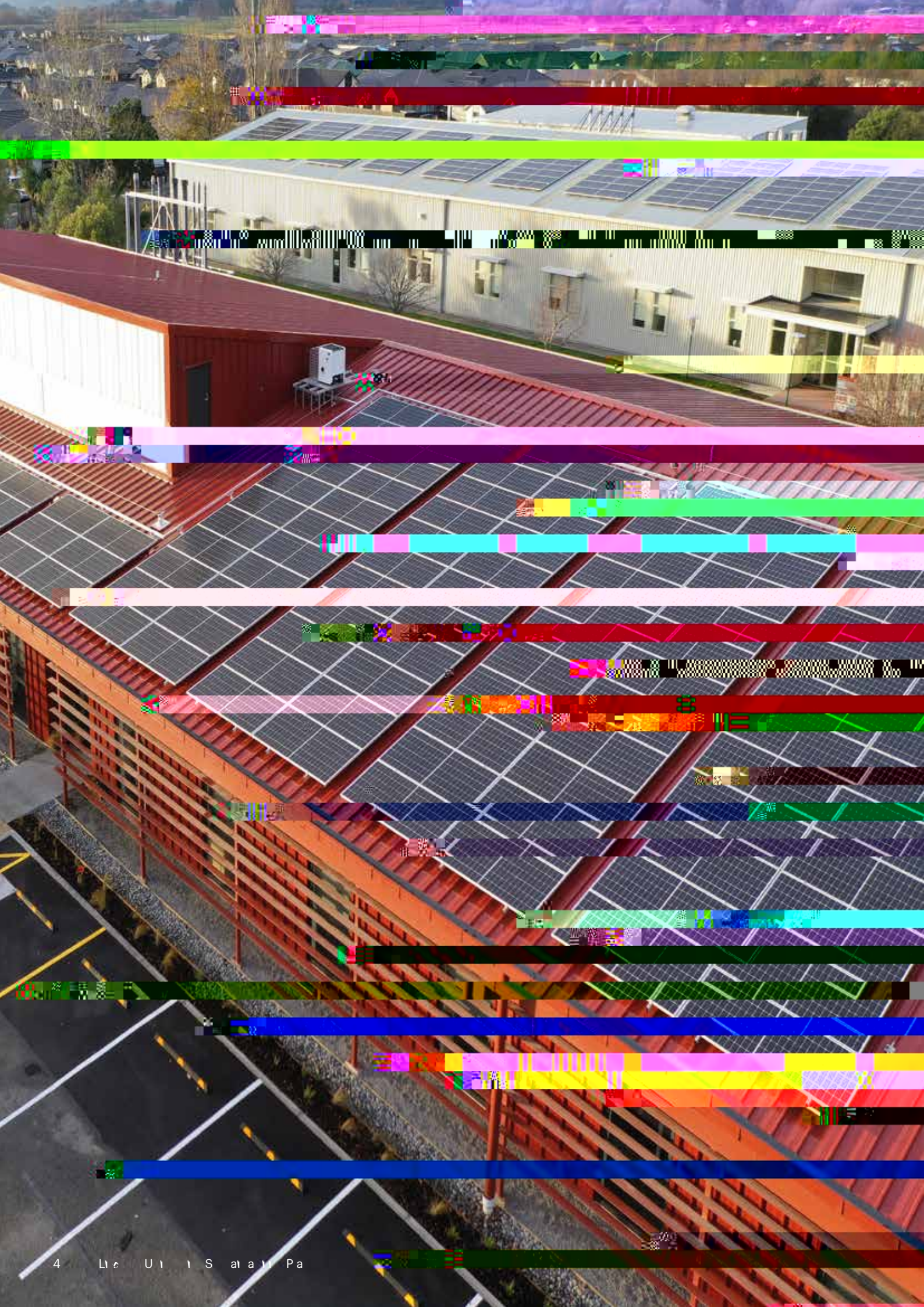
Nau mai, ki Te Whare
W naka o Aoraki

*Plant, nurture and grow the tree of knowledge
Whose roots allow it to move freely
Whose purpose is to support healthy people*



Contents

6	Il a P
7	Alig h Lie U i i Sa g 2019-2028
8	Gi 5Plet
9	G a a R i g fC KPI'
10	S at a i i Pa a Pa g
12	E a i
13	R a e h
14	D a i
15	Ca E i -G i f a e
16	Ca E i -E g
17	Ca E i - a a B i i i
18	Ca E i -M i i
19	Ca E i - a





Vision and purpose



Our **T**estimony
is that the
LDS Church
is a true
and living
organization
of the
people of
God.

S at a l l a l l e a
l e e t h
e t t h f f
g a t . T h i e e t a t
a e b t h a
g f e a - a f e t .
L a - a a t a l l a
æ b a e h t h a t
l g a h a a g f
a , a , t t t a h
l a e
h a a h t t h
g - a t a l l f e
b h g h h a e f
t t a t t e .
a e t t g a
a f a t a æ b
f h a - a e , a h
e t h t :

The Strategic Plan aligns with the University's
Strategic Plan 2019-2028, and the Research, Education,
and Innovation Plan.



Education. The University is a leader in
Zambia's higher education sector and
will continue to lead in the field of
education.

Research. The University has a history
of research excellence and will
continue to lead in the field of
research.

Demonstration. Our academic excellence
will be demonstrated through
our research and teaching
excellence. Our academic
excellence will be demonstrated
through our research and teaching
excellence.

Campus Environment. The University
will create a safe and healthy
campus environment for all
students and staff.

Guided by 5 Principles



University of
Salford

- Align with the Sustainable Development Goals (SDGs).
 The University is committed to the 17 Sustainable Development Goals (SDGs) set by the United Nations in 2015.
- Set a clear vision for the future.
 - The University has a clear vision for the future, which is to be a leading international university by 2030.
- Support the University's strategic plan.
 - The University's strategic plan is a key document that sets out the University's vision, mission, and values.

- Be a global leader in research and innovation.
 - The University is committed to being a global leader in research and innovation, and to making a positive impact on society.
- Be a global leader in research and innovation.
 - The University is committed to being a global leader in research and innovation, and to making a positive impact on society.



Governance and Reporting of Core KPI's



Our vision is to be the most innovative and sustainable company in the world. We are committed to creating long-term value for our shareholders and all stakeholders. Our strategy is to focus on our core business and to invest in our people and our technology. We are committed to transparency and accountability in our reporting.

Core Key Performance Indicators are:

Goal	Focus Area	KPI	Measurement
Goal 1 Sustainable Growth at all levels	Revenue	Revenue Growth	At all levels
	Profit	Operating Profit	At all levels
	Customer	Customer Satisfaction	At all levels
Goal 2 Environmental Impact 2030 and 2050	Carbon	Carbon Footprint	
	Water	Water Usage	
	Waste	Waste Generation	
	Energy	Energy Consumption	

Sustainability Plan on a Page

What do we want to achieve?

Goal 1

Be sector leaders in education, research and demonstration of sustainability



Digital education for all
UN SDG 4

Partnerships for education
UN SDG 17

Quality education for all
UN SDG 4

Capacity building for sustainable development
UN SDG 4

Research and innovation
UN SDG 9

Goal 2

Become carbon neutral by 2030 and carbon zero by 2050

Goal 1, 2, 3 and Share | Goal 4, 5, 6

Campus Environment

Green Infrastructure

Establish a network of green spaces and infrastructure.

Reduce the carbon footprint of buildings.

Implement sustainable landscaping and water management practices.

Enhance the resilience of the campus environment.

Lead by example in sustainable building design.

Energy

Transition to 100% renewable energy sources.

Improve energy efficiency across all campus operations.

Invest in energy storage and smart grid technologies.

Reduce energy consumption in buildings and transportation.

Engage the community in energy conservation efforts.

Report on energy performance and carbon emissions.

Water & Biodiversity

Protect and restore natural ecosystems and biodiversity.

Implement water conservation and recycling programs.

Reduce water consumption in buildings and landscaping.

Support local agriculture and food systems.

Engage students and staff in environmental stewardship.

Monitor and report on water and biodiversity metrics.

Mobility

Encourage the use of public transit, walking, and cycling.

Reduce the number of single-occupancy vehicles on campus.

Invest in sustainable transportation infrastructure.

Provide incentives for carpooling and electric vehicles.

Optimize campus logistics and delivery routes.

Report on transportation-related emissions.

Waste

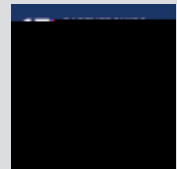
Reduce waste generation and increase recycling rates.

Implement a comprehensive waste management plan.

Engage the community in waste reduction efforts.

Support local recycling and composting programs.

Report on waste management performance.



▶ Education

• **Education** is a **very important** part of **everybody's** life. It is **the** **best** way to **improve** **yourself** and **your country**.



• **Learn / Revision**

S at a ll let a a l a æ hi ga
a i g æ ll a l i e U l l i l i e a a
l h h i g , l a a
l æ a l a ll æ b .

• **CV / Vocabulary**

Actions

D a l e f a l a
e f æ hi ga a i g ha l l
a l l l l i e l g a a l ,

▶ Research

1. The Vowel Chart is a diagram that shows the relative positions of the vowels in the mouth. It is a useful tool for understanding the differences between vowels and for identifying the articulation of a particular vowel.

2. The chart is divided into four quadrants based on the height and frontness of the vowel. The quadrants are:

- High Front (i, e, æ)
- High Back (ɪ, ʊ, ʊ)
- Low Front (ɛ, ɐ, ɛ)
- Low Back (ɔ, ɒ, ɔ)

3. The chart is also divided into three rows based on the height of the vowel:

- High (i, ɪ, ʊ, ʊ)
- Mid (e, ɛ, ɐ, ɛ, ɔ, ɒ)
- Low (ɛ, ɐ, ɛ, ɔ, ɒ)

▶ Vowel Chart

Actions

Read the following text and identify the vowels in each word.

ach ha h at aa a ea
 cha f at all le l a at,
 e la a a at a l l a t, h a
 l l, a ha e f l l l.

E l l a, a a h h
 l a a a f h l at all ach.

U h l l e U l l e a a fa a l f
 a a a ach l at a
 a a a at all cha a, l h
 l l l l l a a a.

D a l ach e f at a
 e e f ach ha at all l l l,
 l e l l l l l a a a, l l a
 e a l a l f, ea at a a.

O l l l l a at all ach j e e l l e U l l l æ h a
O at ea f h l æ f l l e ach at all æ h a
P e f at a ach at ()-5 (æ 1) 1.27G-1.235 30.134839 -5 (aT) .
(Empty cell)
(Empty cell)

▶ Demonstration

Uti h Lie - a a a æ h i a a h
 i h a a a h a i f
 a ñ e high - a fa ha a a i
 a fa a a i , a - f , ha e
 a i i i i , a i a a b i e .

Uti h Lie - a a a æ h i a a h

Uti h Lie - a a a æ h i a a h
 i h a a a h a i f
 a ñ e high - a fa ha a a i
 a fa a a i , a - f , ha e
 a i i i i , a i a a b i e .

Uti h Lie - a a a æ h i a a h

Actions

E a i h h Lie Uti h M i - C E a Fa
 i ha i a i a i f a -
 i i h i a i a i i
 e a - a e .

D , a i i , a a h Lie
 Uti h D a i Fa (LUDF) a fa
 ha 2030 ha a high ñ a i i a
 i a f i (i a N , h a)
 ha a e i a i h i a Ca
 i . Th fa i a a fa
 N Z a a f fa i a , a
 i h i a T Tata fa .

U h Lie Uti h fa a i f a
 a i a a a a i i
 e ha a fa h a - a e , e ha
 i a i a a i i i h
 i i i i i La a a .

▶ Campus Environment - Green Infrastructure

“Green Infrastructure” is a term used to describe a range of natural and semi-natural areas, including parks, green roofs, and urban forests, which are designed to provide a range of ecosystem services, such as improved air quality, reduced urban heat island effect, and increased biodiversity. Green infrastructure is a key component of sustainable urban development and can help to create more livable and resilient cities.

Green Infrastructure

Terdapat lima jenis infrastruktur hijau yang dapat diterapkan di lingkungan kampus.

Green Infrastructure

Actions

Evaluasi kebutuhan infrastruktur hijau di lingkungan kampus.

Rencanakan dan implementasikan infrastruktur hijau (terutama).

Beharulah Tim Evaluasi Fasilitas Kampus (TEFMA) di lingkungan kampus.

Evaluasi lingkungan hijau-fisik di lingkungan kampus.

Implementasikan dan manfaatkan infrastruktur hijau (terutama).

Selanjutnya, akan dilakukan kajian Piloting di lingkungan kampus pada 2022.
Berikut adalah hasil dari kajian tersebut (Terdapat 3 bagian).
Untuk bagian pertama, yaitu hasil dari kajian pada Q4 2021.
Untuk bagian kedua, yaitu hasil dari kajian TEFMA pada Q1 2022.
Untuk bagian ketiga, yaitu hasil dari kajian TEFMA pada Q2 2022.
Untuk bagian keempat, yaitu hasil dari kajian TEFMA pada Q3 2022.
Untuk bagian kelima, yaitu hasil dari kajian TEFMA pada Q4 2022.

Sustainability Goal 2

▶ Campus Environment - Energy

100% of the energy used in the buildings of the University of Applied Sciences is generated from renewable energy sources.



Energy Strategy

The University of Applied Sciences has a high energy efficiency standard, a high level of energy efficiency and a high level of energy efficiency. This is achieved through a high level of energy efficiency and a high level of energy efficiency.

Key Performance Indicators

Actions

- Behavior change initiative
- Energy efficiency measures
- Diffusion of energy efficiency
- Acquisition of energy efficiency
- Development of energy efficiency
- Acquisition of energy efficiency 2022
- Research and development / energy efficiency

Key Performance Indicators

✓	Quality of energy efficiency
✓	Objective of energy efficiency
✓	Objective of energy efficiency
✓	Objective of energy efficiency
✓	Objective of energy efficiency
✓	Objective of energy efficiency 2022
✓	Objective of energy efficiency 2024
✓	Objective of energy efficiency 2030

▶ Campus Environment - Water and Biodiversi

1. **Water** (100%)
2. **Biodiversity** (100%)

Sustainability Goal 2

▶ Campus Environment - Mobility

Our Sustainability Strategy sets out our commitment to reduce our carbon footprint and improve our environmental performance. We are committed to achieving net zero emissions by 2030 and to reducing our Scope 1 and 2 emissions by 50% by 2025. We are also committed to reducing our Scope 3 emissions by 10% by 2025.



Key Initiatives

Reducing our carbon footprint through the use of electric vehicles and bicycles.

Key Performance Indicators

Actions

- Implement a fleet management system to track and reduce our carbon footprint.
- Introduce a car-sharing scheme for staff and students.
- Encourage the use of public transport and bicycles.
- Install electric vehicle charging points on campus.
- Encourage staff and students to use public transport (e.g. buses, trains, taxis) and bicycles.
- Encourage staff and students to use public transport (e.g. buses, trains, taxis) and bicycles.
- Encourage staff and students to use public transport (e.g. buses, trains, taxis) and bicycles.
- Encourage staff and students to use public transport (e.g. buses, trains, taxis) and bicycles.
- Encourage staff and students to use public transport (e.g. buses, trains, taxis) and bicycles.
- Encourage staff and students to use public transport (e.g. buses, trains, taxis) and bicycles.

Key Performance Indicators

✓	All staff	Q1 2022
✓	University of Auckland	100% carbon footprint reduction by 2024
✓	University of Auckland	Q1 2022.
✓	University of Auckland	Q1 2022
✓	University of Auckland	Q4 2021
✓	University of Auckland	Q3 2021
✓	University of Auckland	IGM
✓	University of Auckland	IGM

▶ Campus Environment - Waste

Waste management is a critical component of a sustainable campus environment. It involves the collection, transport, treatment, and disposal of waste materials. Effective waste management practices can reduce environmental impact, conserve resources, and improve public health. Key strategies include recycling, composting, and proper disposal of hazardous materials.



Waste Management

A high fee is charged for a high quality waste management service.

Waste Management

Actions

Establish a waste management plan.
Encourage recycling and composting.
Provide proper disposal facilities.

